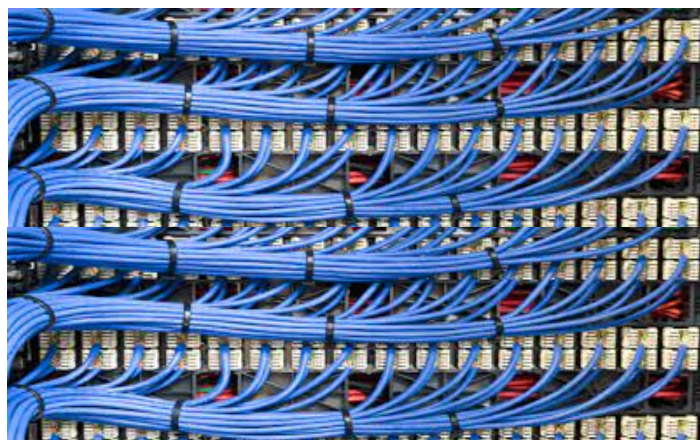


# Unlimited Network 24/7/365 Support

Ensuring the smooth operation and security of your business network is a constant endeavor. That's why we offer Unlimited 24/7/365 Network support, dedicated to monitoring and maintaining your IT environment day in and day out.

Our Network support service provides round-the-clock coverage, with continuous monitoring and management of your network. With multiple delivery centers actively overseeing your IT environment, we offer comprehensive support and surveillance at a fixed per device monthly rate.

By availing our Network support, your business can reap various benefits. Experience reduced downtimes, enhanced security measures, improved performance, and increased employee satisfaction. Our proactive approach to network management helps minimize disruptions, fortify security, optimize performance, and ensure the seamless functioning of your IT infrastructure.



## Remote Support Coverage\*

24/7/365 Monitoring  
24/7/365 Live Support Technicians

## Cost\*\*

Network Security Appliance - \$49.95 per month  
Network Appliance - \$19.95 per month

## Supported Types

Phone  
Remote  
Onsite with Managed IT\*

## Network Manufacturers Supported

CheckPoint  
Netgear  
Cisco  
Juniper  
Sonicwall  
Fortinet

## On-site Supported Services

Add Managed IT Services to have On-Site support added to your Network Support.

## Key Partners

HP, Lenovo, Dell EMC, Apple, Microsoft, VMware, Veeam, Intel, Check Point, SonicWall. For a full list contact us.

## Related Services

Managed IT Support  
Unlimited Help Desk Support Unlimited  
Server & VM Support  
Private Cloud Hosting  
Enterprise Hardware  
Offsite Backup

\*Some support services require onsite support or level two support that is covered by Technology Associates.

\*\*Prices and support coverage and technologies are subject to change without notice.

1402 Queen St West, Brampton, Ontario, Canada

p: 905-459-2100

WWW.technologyassociates.ca

TECHNOLOGY ASSOCIATES INC   
Business IT Services